

Batsford **C**HESS **O**PENINGS



Gary Kasparov
Raymond Keene

Batsford Chess Openings authoritatively provides, in one inexpensive volume, the pick of contemporary opening knowledge concisely presented in easy-to-follow columns.

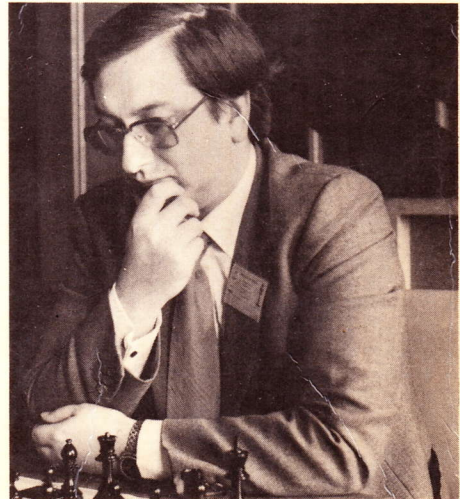
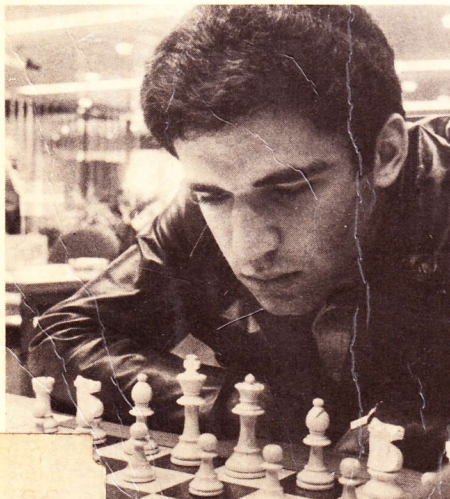
- International Figurine Algebraic Notation
- All the notes on the same double spread as the columns
- An introduction to each opening giving the strategic ideas and historical background
- Careful selection of material, ensuring a balance between currently topical lines and important theory
- Combination of two leading Grandmasters
- Substantial original suggestions and new ideas
- All openings covered

The authors _____

Gary Kasparov was born in the Soviet republic of Azerbaidzhan. He won the Junior World Championship in 1980 and became a Grandmaster in the same year. In 1981 he was joint first in the USSR Championship and achieved a rating of 2640 in January 1982. An enormously energetic and exciting player, he is widely regarded as a future World Champion.

Raymond Keene, British Champion in 1971, became London's first Grandmaster in 1976. A much-travelled and very experienced tournament player, he was a member of seven Olympiad teams between 1966 and 1980. He is an expert on opening theory, noted for his pioneering works *The Pirc Defence*, *The Modern Defence* and *The Nimzowitsch/Larsen Attack*. Rated 2505 in January 1982.

Eric Schiller, who researched and edited material for this book, is an International Arbiter and translator of many Russian books.



27-95