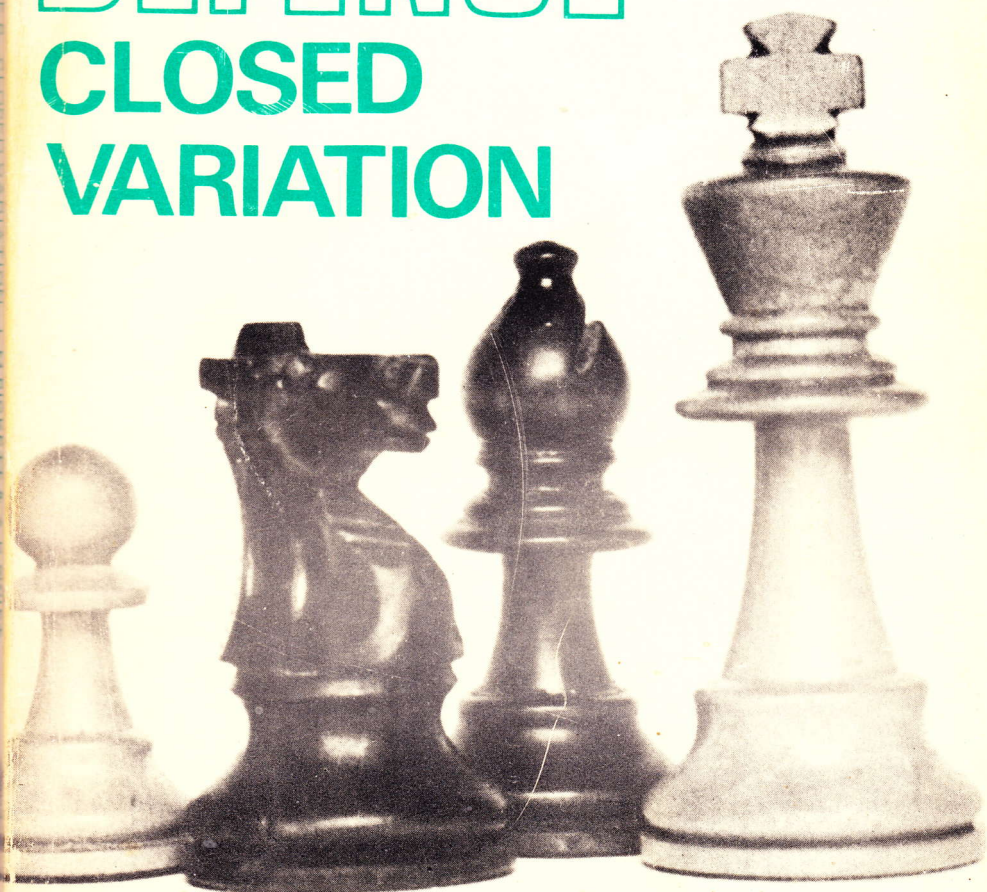


SICILIAN DEFENCE

CLOSED VARIATION

6



L.M.Pickett & A.K.Swift

The Closed Variation

of the Sicilian Defence is an important one as the first player by choosing it can force the game into markedly different channels from most other variations of this opening.

The Closed Variation

will suit those players who prefer a more blocked, slower game and this will not be attractive to most second players who have chosen what is normally an open, attacking defence. However, the second player cannot avoid this variation and thus must be prepared to meet it.

